



राष्ट्रीय प्रौद्योगिकी संस्थान रायपुर  
NATIONAL INSTITUTE OF TECHNOLOGY RAIPUR  
(An Institute of National Importance)  
Under Ministry of Education, Government of India  
DEPARTMENT OF CIVIL ENGINEERING



### ABOUT NATIONAL INSTITUTE OF TECHNOLOGY RAIPUR AND DEPARTMENT OF CIVIL ENGINEERING

National Institute of Technology Raipur (NIT Raipur) is one of the premier engineering institutions in India. NIT Raipur was established in 1956 as Government Engineering College Raipur. It was upgraded to National Institute of Technology and declared as an Institute of National Importance in 2005. The campus is located in Raipur, the capital city of Chhattisgarh.

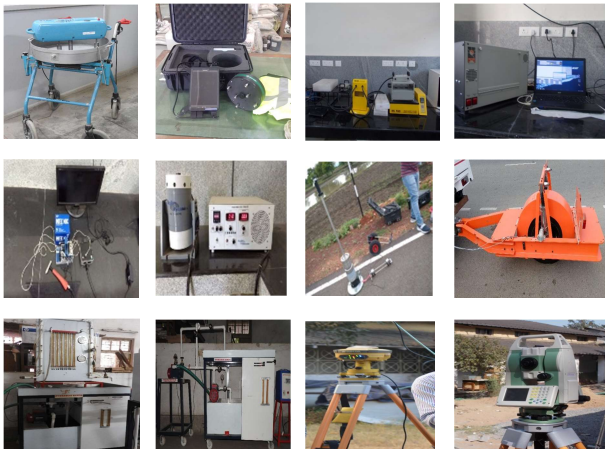
The Department of Civil Engineering at NIT Raipur has been producing high-quality technical manpower since 1958. With its multifaceted faculty the department emphasizes research, development and consultancy in Structural, Geotechnical, Transportation, Water Resources, Environmental and Geomatics. It provides high-quality teaching at undergraduate and postgraduate levels and encourages students to engage in extra-curricular activities for overall development.

### RELATIONSHIP WITH INDUSTRIES

The department comprises a diverse team of experienced faculties. Our Faculty members offer consultancy services in areas like structural design, soil testing, water resources and environmental impact assessment, enhancing real-world problem-solving skills and industry relevance. It maintains strong contacts with various corporations across India through high-quality technical advisory support. Recognized as a State Technical Agency, the department plays a crucial role in implementing projects like PMGSY, climate-specific action plans for water supply, and the National Rural Drinking Water Programme. Clients for our consultancy projects include public and private sector organisations like SAIL, BSNL, NMDC, NTPC, RVNL, Indian Railways, SECL, BALCO, BSP, AAI, NHAI, CGECB, CSEB, CGPCB, State PWD, CGRRDA, CGIDCL, L&T, ACC, etc. The department has attracted significant research funding from government and private agencies such as HUDCO, CGCOST, NRIDA (NRRDA), BSP, FSNL, CGECB, Godavari Ispat & Power LTD, etc. delivering excellent implementable solutions.

### DEPARTMENT STRENGTH AND RESOURCES

The Civil Engineering Department at NIT Raipur is well-equipped with state-of-the-art laboratories such as Concrete, Structural Engineering, Structural Health Monitoring, Structural Dynamics, Geotechnical, Environmental, Fluid Mechanics, Water Resources Engineering, Transportation Engineering labs, Advanced Geotechnical & Environmental Engineering, and Surveying Lab. It offers access to specialized software like AutoCAD, STAAD.Pro, MATLAB, ANSYS, SAP 2000, Bentley LEAP Bridge, Arc GIS, GEO Media, Water GEMS, Sewer GEMS, Life cycle assessment, Plaxis 2D, GaBi, Slope W, MX Road and Mx Rail and many more. The department's highly skilled faculty and technical staff excel in using a diverse range of instruments and software. Their expertise significantly enhances the efficiency and progress of research, consultancy, and testing projects.



For more information  
about the civil  
engineering department  
Scan the QR



**Dr. S. V. Deo**  
Head, Department of Civil Engineering  
National Institute of Technology Raipur  
Email: [hod.ce@nitrr.ac.in](mailto:hod.ce@nitrr.ac.in)

**Dr. Alfia Bano**  
Department of Civil Engineering  
National Institute of Technology Raipur  
Email: [alfia.ce@nitrr.ac.in](mailto:alfia.ce@nitrr.ac.in)  
Contact: +91-9889914726